

## Baruch Computing and Technology Center



FIG. 1.—EXTERIOR OF POWER STATION ON 25TH STREET FOR LEXINGTON AVENUE SYSTEM, NEW YORK.

Exterior of Power Station for Lexington Avenue System  
(*Street Railway Journal*, Vol. XI, No. 12, December 1895, pg 777).

The Baruch Computing and Technology Center, located at 151 East 25<sup>th</sup> Street began as a state-of-the-art power station in 1895 for the Lexington Avenue system of the Metropolitan Street Railway Company. In the nineteenth century cable cars served Lexington Avenue passengers from 22<sup>nd</sup> Street and Broadway, down 23<sup>rd</sup> Street to Lexington Avenue and up Lexington Avenue again to 105<sup>th</sup> Street. The new power station produced the steam to power the system.



Construction of the railway next to  
Madison Square Park after 1890  
(From the Baruch College Archives)



Railway Construction  
after 1890  
(From the Baruch College Archives)



No. 970 146 Street Power House  
1898  
(From the Baruch College Archives)



Metropolitan Street Railway  
Car after 1890  
(From the Baruch College Archives)



Metropolitan Railway Company  
Office 1897  
(From the Baruch College Archives)



Crew in front of 151 East 25<sup>th</sup> Street  
after 1895  
(From the Baruch College Archives)

The cable car became obsolete in less than two decades after the construction of the Metropolitan Street Railway Company building, but its upper floors were utilized by other establishments, including printers, garment factories, a carpentry school, and a garage on the first floor.



Interior before remodeling  
Pre 1994  
(From the Baruch College Archives)

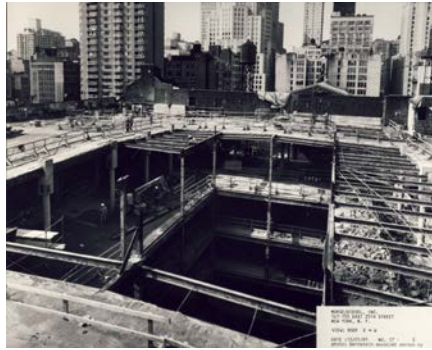


Interior before remodeling  
Pre 1994  
(From the Baruch College Archives)

Remodeling of the building began in the early 1990s financed by bonds issued through the New York State Dormitory Authority. The renovation of the site was managed by Morse/Diesel as the construction manager and Davis Brody & Associates were the project architects.



Atrium View from the 6<sup>th</sup> Floor  
After 1990  
(From the Baruch College Archives)



View from the Roof 1991  
(From the Baruch College Archives)



Scaffolding on the Roof  
After 1990  
(From the Baruch College Archives)



9<sup>th</sup> Floor Renovations

(From the Baruch College Archives)



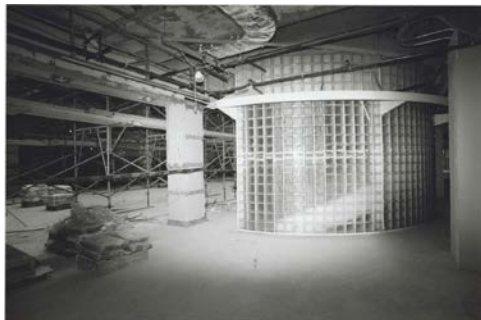
9<sup>th</sup> Floor Renovations

(From the Baruch College Archives)



9<sup>th</sup> Floor Renovations

(From the Baruch College Archives)



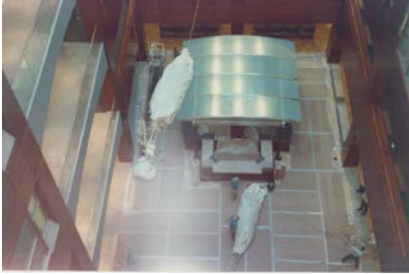
Library Renovation in Progress

(From the Baruch College Archives)



Newman library staircase

(From the Baruch College Archives)

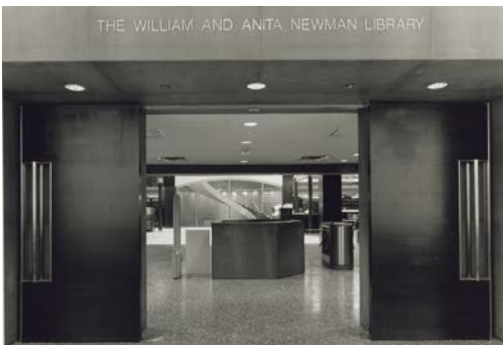


Library Renovation in Progress  
(From the Baruch College Archives)



Library Renovation in Progress  
(From the Baruch College Archives)

The library opened in 1995 and has since won praise and awards for its design.



Newman Library Entrance  
(From the Baruch College Archives)



Newman Library  
(From the Baruch College Archives)



Newman Library  
(From the Baruch College Archives)



Newman Library  
(From the Baruch College Archives)

Newman Library  
(From the Baruch College Archives)



Newman Library  
(From the Baruch College Archives)

The building is multi-purposed as was its predecessor. In addition to the library, the building houses offices, a conference center, a computer center and the acclaimed Subotnick Financial Center which opened in 2000 with the Bert W. and Sandra Wasserman simulated trading floor.



Original Building Seal



The Baruch Computer and  
Technology Building,  
ca. 1995  
(Baruch College Archives)



Original Building Seal

(Building seal photos by Alexander Gelfand, February 2009)